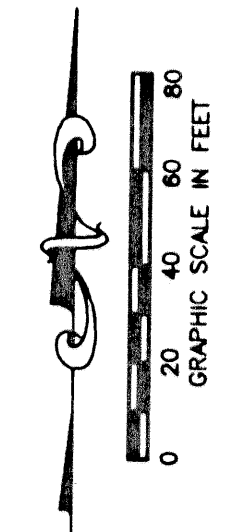


MIRASOL PARCEL SEVEN

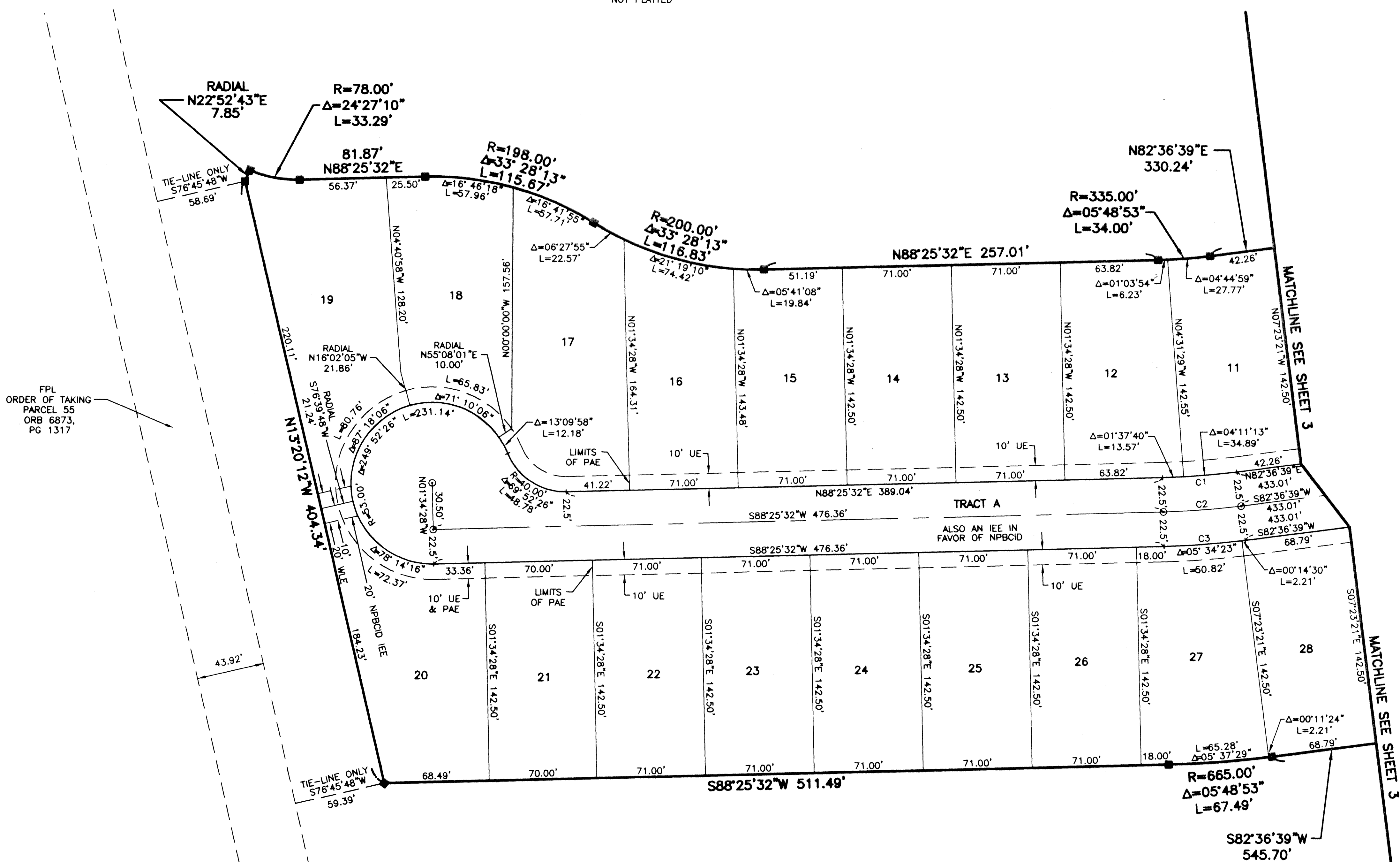
PART OF GOLF DIGEST P.C.D.
 SECTIONS 4 AND 5, TOWNSHIP 42 SOUTH, RANGE 42 EAST,
 CITY OF PALM BEACH GARDENS,
 PALM BEACH COUNTY, FLORIDA
 SHEET 4 OF 4



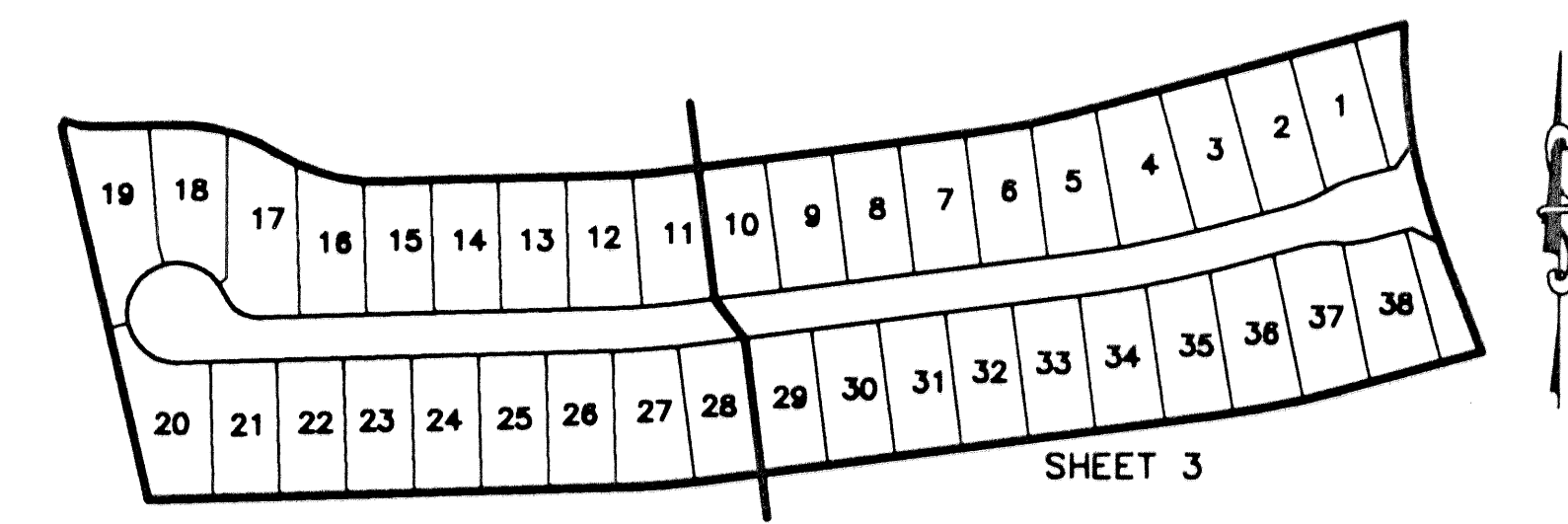
STATE OF FLORIDA
 COUNTY OF PALM BEACH
 THIS PLAT WAS FILED FOR
 RECORD _____
 THIS _____ DAY OF _____
 AD, 2002 AND DULY RECORDED
 IN PLAT BOOK _____ ON PAGES
 _____ AND _____
 DOROTHY H. WILKEN, CLERK
 BY: _____, D.C.

CIRCUIT COURT SEAL

GOLF DIGEST, PCD
 NOT PLATTED



- LEGEND**
- Δ CH CENTRAL (DELTA) ANGLE
 - CH CHORD
 - DE DRAINAGE EASEMENT
 - IEE INGRESS-EGRESS EASEMENT
 - FPL FLORIDA POWER AND LIGHT
 - L ARC LENGTH
 - NPBCID NORTHERN PALM BEACH COUNTY IMPROVEMENT DISTRICT
 - (NR) NON-RADIAL
 - ORB OFFICIAL RECORD BOOK
 - PAE PEDESTRIAN ACCESS EASEMENT
 - PB PLAT BOOK
 - PG(S) PAGE(S)
 - PCD PLANNED COMMUNITY DEVELOPMENT
 - R RADIUS
 - UE UTILITY EASEMENT
 - WLE WATER LINE EASEMENT
 - PERMANENT REFERENCE MONUMENT
 - FOUND LB 048 (4"x4" CONCRETE)
 - ⊙ PERMANENT REFERENCE MONUMENT SET LB 048 (4"x4" CONCRETE)
 - ⊙ PERMANENT CONTROL POINT SET LB 048
 - ⊙ CENTERLINE
 - C1 CURVE TABLE REFERENCE



SHEET 4
 SHEET LOCATION MAP
 NOT TO SCALE

CURVE TABLE				
CURVE	RADIUS	CENTRAL ANGLE	ARC LENGTH	CHORD
C1	477.50'	05°48'53"	48.46'	
C2	500.00'	05°48'53"	50.74'	S85°31'06"W 50.72'
C3	522.50'	05°48'53"	53.03'	

GOLF DIGEST, PCD
 NOT PLATTED

THIS INSTRUMENT WAS PREPARED BY MARY HANNA CLODFELTER, P.S.M. IN THE OFFICES OF MOCK, ROOS & ASSOCIATES, INC., 5720 CORPORATE WAY, WEST PALM BEACH, FLORIDA 33407.

SCALE: 1"=40'
 P.A. NO.: 99361.00
 DATE: OCTOBER, 2001
 DRAWING NO.: 42-42-04-101

FLORIDA L.B. NO. 48

MOCK • ROOS
 ENGINEERS • SURVEYORS • PLANNERS

5720 Corporate Way, West Palm Beach, Florida 33407
 (561) 663-3113, fax 478-7248

MIRASOL PARCEL SEVEN
 PART OF GOLF DIGEST P.C.D.
 SITUATE IN SECTIONS 4 AND 5,
 TOWNSHIP 42 SOUTH, RANGE 42 EAST,
 CITY OF PALM BEACH GARDENS,
 PALM BEACH COUNTY, FLORIDA

REV.: 03-14-02
 CAD FILE:
 TAYLPA07\PA07RP02